

**CORNWALL REFUGE TRUST**  
**A COMPANY LIMITED BY GUARANTEE**  
**ANNUAL REPORT AND FINANCIAL STATEMENTS**  
**31 MARCH 2021**



**PHILLIPS FRITH LLP**  
**CHARTERED ACCOUNTANTS**  
**REGISTERED AUDITORS**  
**9 TREGARNE TERRACE**  
**ST AUSTELL**  
**CORNWALL**

**ANNUAL REPORT AND FINANCIAL STATEMENTS****FOR THE YEAR ENDED 31 MARCH 2021****CONTENTS****Page**

Trustees and Advisers	2
Trustees' Annual Report	3 - 10
Auditors' Report	11 - 13
Statement of Financial Activities	14
Balance Sheet	15
Statement of Cash Flows	16
Notes to the Financial Statements	17 - 31

**CORNWALL REFUGE TRUST**

**Page 2**

**TRUSTEES AND ADVISERS**

**31 MARCH 2021**

**PRINCIPAL AND REGISTERED OFFICE**

Cornwall Refuge Trust  
PO Box 80  
TRURO  
Cornwall  
Registered Number: 1105270  
Company Number: 05178212

**SOLICITORS**

Stephens Scown Solicitors LLP  
1 High Cross Street  
ST AUSTELL  
Cornwall  
PL25 4AX

**TRUSTEES**

Karen Furness  
Kate Hamilton  
Pam Thurlow  
Nicky Houghton  
Sarah Shobbrook

**BANKERS**

HSBC Bank Plc  
17 Boscawen Street  
TRURO  
Cornwall  
TR1 2QZ

**COMPANY SECRETARY**

Kate Hamilton

**MANAGEMENT COMMITTEE**

Karen Furness - Chair  
Pam Thurlow - Accounts Liaison Trustee  
Kate Hamilton - Vice Chair  
Nicky Houghton

Helen Luetchford  
Sarah Shobbrook  
Ellen Richards

**AUDITORS**

Phillips Frith LLP  
9 Tregarne Terrace  
ST AUSTELL  
Cornwall  
PL25 4DD

**CORNWALL REFUGE TRUST****TRUSTEES' ANNUAL REPORT FOR THE YEAR ENDED 31 MARCH 2021**

The Trustees have pleasure in presenting their report and audited financial statements for the year ended 31 March 2021, which we also prepared to meet the requirements for a directors' report and accounts for Companies Act purposes.

The financial statements comply with the Charities Act 2011, the Companies Act 2006 and Accounting and Reporting by Charities: Statement of Recommended Practice applicable to charities preparing their accounts in accordance with the Financial Reporting Standard applicable in the UK and Republic of Ireland (FRS 102) (effective 1 January 2019).

**REFERENCE AND ADMINISTRATIVE DETAILS**

**Charity registration number: 1105270**

**Company registration number: 05178212**

**Principal Office and Advisors**

These are detailed on page 2.

**Trustees**

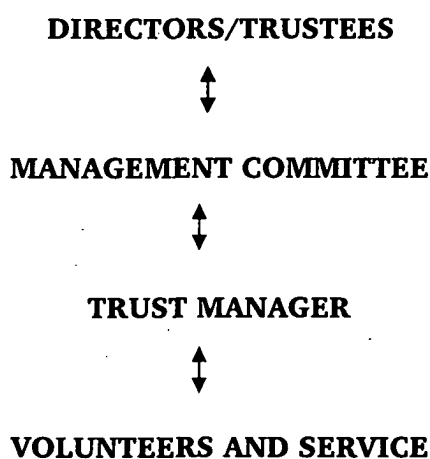
The names of trustees serving during the year and since the year end are shown on page 2.

**Legal Status and Governing Document**

Cornwall Refuge Trust (previously Cornwall Women's Refuge Trust) was incorporated by the Memorandum & Articles of Association dated 13 July 2004 as amended by special resolution on 18 February 2016. The Trust is a company limited by guarantee (registered number 05178212) and does not have a share capital. The Trust is also a registered charity (registered number 1105270). In accordance with Section 60 of the Companies Act 2006, the word 'limited' is omitted from the name. The liability of the members who constitute the Trust is limited to £1 per member.

**STRUCTURE, GOVERNANCE AND MANAGEMENT**

The Trust is run by a Board of Trustees. The Trustees are also directors of the company for the purposes of the Companies Act 2006.

**CORNWALL REFUGE TRUST STRUCTURE**

The day-to-day management of the Charity is delegated to the Trust manager Ellen Richards, who is assisted by the project managers for each of the projects. The Trustees meet as a full board at least six times per year including the Annual General Meeting to ensure that the governance of the Charity is implemented, to discuss the strategic direction of the Charity, to monitor financial performance, risk, human resources and operations, and all decisions reached are done so by a majority vote.

**CORNWALL REFUGE TRUST****TRUSTEES ANNUAL REPORT FOR THE YEAR ENDED 31 MARCH 2021 (continued)****STRUCTURE, GOVERNANCE AND MANAGEMENT (continued)****Appointment and training of Trustees**

As set out in the Articles of Association, the Trustees are nominated by the existing management committee members. They are then invited to join the Trust by the Trust manager. The number of Trustees shall be not less than three. Trustees are invited to attend Trust training but the majority are already sufficiently experienced.

**Pay policy for senior staff**

All Trustees give of their time freely and no trustee received remuneration in the year. The pay of the senior staff is reviewed annually by the Management Committee. Salaries are set based on a pay scale and increment pay rises are given where employees have moved to a higher point on this scale.

**PURPOSES AND ACTIVITIES****The purpose of the Charity**

The relief of poverty and distress among men and women who experience domestic violence and the children of those men and women.

**Mission Statement**

*'Cornwall Refuge Trust provides a safe, supportive environment for men, women and children who have escaped domestic abuse. We offer support and advice empowering the person for a safer and happier future.'*

**Aims of Charity for the public benefit**

- To offer refuge to men, women and children who have escaped domestic abuse.
- To offer emotional support to the men, women and children who have come to the refuge and when they resettle in the community.
- To offer practical help to men and women who have come to the refuge.
- To offer support to all victims of domestic abuse in the community.
- To work with our partners to raise awareness of domestic abuse as an issue and how best to address it.
- To support team members so that we can work to our full potential.

**Our objectives to accomplish the above aims are:-**

- To manage the men's and women's refuges offering temporary accommodation to men, women and their children who are victims of domestic abuse.
- To provide a domestic abuse counselling project for *all* victims of domestic abuse over 16 years of age.
- To provide an outreach support service to male victims of domestic abuse.
- To provide high quality advice and support to callers on the 24 hour helpline.
- To attend relevant forums and meetings to ensure CRT is kept up to date on local and national domestic abuse strategic planning.

**OVERVIEW**

The past 12 months have been challenging for everyone with the Covid-19 lockdowns and restrictions but we have continued to deliver high quality services and support to service users throughout the pandemic. We have also continued to ensure that a high percentage of our income goes on frontline service delivery. We have maintained consultation with service users, making use of remote means such as telephone and video conferencing whenever possible, and using appropriate PPE whenever face to face contact was considered essential.

**CORNWALL REFUGE TRUST****TRUSTEES' ANNUAL REPORT FOR THE YEAR ENDED 31 MARCH 2021 (continued)****OVERVIEW (continued)**

We have been able to maintain a service delivery for all projects by successful funding applications and working closely with the Local Authority. Our core business of refuge provision has been maintained for the female refuge by Local Authority funding and for the male refuge by The Big Lottery Fund up to the end of October 2020. Our child and family work is partly funded by the Local Authority with additional funding from BBC Children in Need for three years, ending August 2021. In addition to our Child and Family Support Worker we have been able to employ a Child and Young Person Worker due to additional funding received from the Local Authority this year. Our 24-hour domestic abuse helpline is also partly funded by the Local Authority.

Our Volunteer Project, which includes Waves Counselling, is partly funded by the Local Authority via First Light, with additional funding from the Big Lottery Fund (ended October 2020) and The Lloyds Bank Foundation. Our Resettlement project, which supports our residents as they leave refuge to set up homes in the community, is funded by the Tudor Trust.

In addition we have received a number of grants towards expenses related to the Covid-19 pandemic, these are listed below. As mentioned previously our Big Lottery funding for our male refuge and Waves ended in October 2020 and our new application was put on hold as a result of the Covid pandemic. We were therefore very grateful for the understanding and flexible approach of the Lloyds Bank Foundation and the Tudor Trust who were both happy for us to divert funds to cover the gap in funding for our Norda House Project (male refuge). Additionally we received two Covid-related grants from the Police & Crime Commissioner for Devon & Cornwall which also helped greatly to cover our shortfall in funding for both projects.

We have also been able to expand and develop our Refuge Resettlement Project through funding from the Tudor Trust which enables us to continue to support our residents once they move out of refuge. This greatly improves the likelihood of a successful outcome for these families and individuals.

We have 7 Management Committee members, 5 of whom are Directors and Trustees, all offering their time and specialist skills voluntarily.

We have had a staff team of between 14 and 16 over the year, including full-time and part-time staff.

In the past year we had 38 Waves volunteer counsellors but unfortunately as a result of the pandemic we have not been able to run our Refuge Volunteer project. We offer volunteers a high level of training and support and unique volunteering opportunities which enable them to improve their skills and employability in a very specialist area of work.

**PUBLIC BENEFIT**

The Trustees have complied with their duty to have due regard to guidance published by the Charity Commission on the operation of the Public Benefit requirement.

**CORNWALL REFUGE TRUST****TRUSTEES' ANNUAL REPORT FOR THE YEAR ENDED 31 MARCH 2021 (continued)****ACHIEVEMENTS AND PERFORMANCE**

We have been awarded the following grants:

- Community Safety Partnership (LA) - Women's refuge, child and family work and part funding for the 24/7 Helpline
- First Light Southwest Ltd - part funding for the Waves Counselling Project
- Cornwall Community Foundation - Hardship Fund - to assist with crisis expenses for residents.
- Cornwall Community Foundation - Surviving Winter Fund - to assist residents with suitable winter clothing and other winter-related needs.
- BBC Children in Need, started September 2018 to pay Child and Family Support Worker 12.5 hours per week - ends August 2021.
- Lloyds Bank Foundation - from April 2019 for the Volunteer Project (including Waves) and core costs - ends March 2022 (may be extended for one year)
- Tudor Trust - From October 2019 for the Refuge Resettlement Project - ends September 2022.
- Tudor Trust grant for Covid-related expenses including education, cleaning and PPE
- Tudor Trust Wellbeing grant for staff, trustees and volunteers
- The Big Lottery Fund - from November 2017 for Norda House (men's refuge) and the Waves Project - ended October 2020.
- Big Lottery Awards for All - funding for Norda Child and Family Work (received October 2018 funding was initially for 1 year but some funds remain).
- Acts 435 - funding for ad hoc residents' needs (eg. school uniform, travel, mobile phones, legal costs, moving costs, curtains for new homes)
- Ministry of Housing, Communities & Local Government – grant for Covid-related costs and to keep providing our 24-hour domestic abuse helpline during the Covid pandemic
- Neighbourly Ltd – Covid grant, unrestricted
- Penzance Council – Covid grant for Waves (Penzance clients)
- Police Crime Commissioner for Devon & Cornwall – Covid grant for Waves
- Police Crime Commissioner for Devon & Cornwall – additional Covid grant for Norda and remote working costs
- Western Power – Christmas celebrations grant
- The Pat Newman Memorial Trust – grant for running parenting classes – on hold due to the pandemic

We have received many financial donations this year from individuals and community groups. Additionally, we have received Gift Aid and small regular donations, and are in receipt of assistance from Hidden Help who help us with supplying furniture and home goods for residents moving out of refuge. Several church and community groups offer continued support with clothing, toiletries and homeware for both male and female residents and those moving out into the community. We are well supported by the community for Easter and Christmas, helping our service users to enjoy these celebrations.

Cornwall Refuge Trust (CRT) projects have achieved the following service figures:

- Refuges - 35 adults and 32 children received comprehensive residential support (2020: 24 adults and 27 children)
- The Helpline – 6232 support calls received or made within our 24-hour service (2020: 3136)
- The WAVES Project - 652 referrals were made to WAVES (2020: 926)
- The Resettlement Project – 13 families and 10 single adults were successfully supported to resettle in the community.

**CORNWALL REFUGE TRUST****TRUSTEES' ANNUAL REPORT FOR THE YEAR ENDED 31 MARCH 2021 (continued)****ACHIEVEMENTS AND PERFORMANCE (continued)****The Women's Refuge and Norda House**

The level of support offered when entering our refuges is very comprehensive. From the point of receiving the referral, we assist with safety planning for the person or family to leave their abuser and area of risk. We support them to arrange safe transport and their rooms are prepared with welcome packs for both adults and children. Residents are supported to access benefits, including housing benefit, GP services and schools. We ensure emotional needs are met by offering support, a listening ear and a friendly welcoming environment.

For the period of their stay they are appointed a key worker who meets with them regularly and offers individual needs-led support for single adults and families. Support is offered to children and young people with therapeutic sessions, outings, activities, birthday and seasonal events and treats.

Additional services are offered by the refuges when residents are moving out to support them in establishing new homes in the community. These additional services include providing furnishings, emotional support on moving, support for children and young people, help with getting to know the community, accessing services and school placements.

The refuge and resettlement staff are dedicated, hardworking people who are passionate about what they do and go the extra mile in supporting residents.

**The Volunteer Project & WAVES Counselling**

This project is extremely good value for money. We employ one full-time Coordinator / Project Manager who recruits, trains and supervises all counselling volunteers and sessional workers and, normally, one part-time Volunteer Supervisor, who recruits, trains and supervises all refuge volunteers. However, since the start of the Covid-19 pandemic we have had to put our refuge volunteer project on hold for the time being.

Our counselling volunteers are mainly students studying counselling who are required to gain experience in counselling, whilst our refuge volunteers come from all walks of life. We offer them all a vast array of training opportunities and professional supervision. There have been several volunteers who have gone on to be employed by CRT or other DA providers.

We continue to use qualified counsellors as sessional workers to assist the coordinator in taking referrals and processing assessments, and more recently to provide additional counselling sessions in order to bring down the Waves waiting list as a result of funding received for this purpose.

**Donated services**

Donated services were received from Phillips Frith LLP who do not charge for processing our wages and payroll. We have several community groups (including the Rotary Club, Inner Wheel Club, Lions Club, the Soroptomists, Women's Institute, Mothers' Union and many church groups and local businesses) who have donated to general funds, residents' support and the children's project, as well as gifts for adults and children, household items, money for school uniforms and funds for Christmas and Easter celebrations. Additionally, we received financial donations from individuals and donated items which were offered to refuge residents to assist in their resettlement.



**CORNWALL REFUGE TRUST****TRUSTEES' ANNUAL REPORT FOR THE YEAR ENDED 31 MARCH 2021 (continued)****CURRENT STATUS AND FUTURE PLANNING**

CRT will continue to deliver high quality, life changing services.

We continue to work closely with the Local Authority and other DASV providers to ensure our services continue and our high standards of support are maintained.

We plan to continue to deliver domestic abuse services, ensuring that we are able to offer excellent support to those who enter our projects. We have a very dedicated team of staff and volunteers who have specialist skills and a work ethos that is outstanding.

We are pleased to have received confirmation that the Local Authority will provide funding for our male refuge (Norda House project) from April 2021 and also additional funding for our Children's Project and our Resettlement Project.

Our values are to lead and deliver domestic abuse services with passion and dedication; to be accountable and have integrity in all we do; to embrace diversity, and to always work towards a high quality of service delivery. We are determined to continue to strive to support those people harmed by abuse in the home, assisting them to move towards a safer and happier future.

**FINANCIAL REVIEW**

In 2021, CRT had a surplus of £55,578 (2020: surplus of £43,014). Total income increased by £49,554 to £543,791.

The principle funding sources of the Charity continue to be grants received from various organisations which are used to support the running costs of both refuges and various counselling and support projects. Housing benefit is also received to help fund the running costs of both refuges, more detail is provided in notes 2 and 14 of these financial statements.

Expenditure has increased by £36,990 to £488,213.

Net assets increased to £737,885 (2020: £683,110). During the year the Charity had a positive cash flow of £64,561.

At 31 March 2021, the Charity held total cash balances of £542,858 (2020: £478,297).

**Reserves Policy**

It is the policy of the Cornwall Refuge Trust to maintain unrestricted funds, which are the free reserves of the Charity (excluding fixed assets), at a level which equates to the approximate six month unrestricted expenditure. This provides sufficient funds to cover management, administration, support costs and to respond to emergency expenditure which arises from time to time.

As at 31 March 2021 free reserves totalled £359,023. This compares with £290,109 at the previous year end.

The Trust holds £70,000 in a designated reserve to cover the costs of interim accommodation to assist those moving from intensive support in the Refuge to community living. The designated reserves are not included in free reserves.

Restricted reserves held at 31 March 2021 amounted to £300,900 (2020: £313,824). A description of these funds is provided in note 14. Included in the restricted reserves is £226,446 (2020: £232,415) that relates to tangible fixed assets, which includes the freehold property.

**CORNWALL REFUGE TRUST****TRUSTEES ANNUAL REPORT FOR THE YEAR ENDED 31 MARCH 2021 (continued)****FINANCIAL REVIEW (continued)****Reserves Policy (continued)**

The Charity now holds an expendable endowment fund, in the form of investments in Meteor Senior Life Settlements Sterling Fund. This investment was a gift from West Cornwall Youth Trust and the value of the year end was £7,383.

Total funds held by the Charity at 31 March 2021 amounted to £737,885 (2020: £683,110).

**Risk Policy**

The Trustees have examined the major strategic, business and operational risk which the Charity faces and confirm that systems have been established to enable regular reports to be produced so that the necessary steps can be taken to mitigate the exposure to these risks.

The principle risks to which the charity is exposed are:

- Risk of fraud perpetrated by trustees or employees of the charity
- Risk of accidental damage to the charity's property
- Risk of losing funding for support costs (Community Safety Partnership) and additional projects

Non-financial risks arising from fire and health and safety are managed by weekly health and safety checks of both refuges and the fire alarms are tested weekly by external companies. Regular health and safety awareness training is provided to staff.

**Investment Policy**

The management committee has considered the most appropriate policy for investing funds and has agreed that instant access to funds is currently necessary to enable the Charity to operate effectively. The funds, therefore, are currently held in bank deposit accounts with an approved UK regulated bank.

**Going Concern**

The accounts are prepared on a going concern basis which assumes the Trust will continue to operate for the foreseeable future. The trustees consider this to be appropriate having regard to the circumstances outlined in note 19.

**TRUSTEES' RESPONSIBILITIES IN RELATION TO THE FINANCIAL STATEMENTS**

The Trustees (who are also directors of the Charity for the purposes of company law) are responsible for preparing the Trustees' Annual Report and the financial statements in accordance with applicable law and regulations.

Company law requires the Trustees to prepare financial statements for each financial year. Under that law the Trustees have elected to prepare the financial statements in accordance with United Kingdom Generally Accepted Accounting Practice (United Kingdom Accounting Standards and applicable law). Under company law the Trustees must not approve the financial statements unless they are satisfied that they give a true and fair view of the state of affairs of the charitable company and of its income and expenditure for that year. In preparing those financial statements, the Trustees are required to:

- select suitable accounting policies and apply them consistently;
- observe the methods and principles in the applicable Charities SORP;
- make judgements and estimates that are reasonable and prudent;
- prepare the financial statements on the going concern basis unless it is inappropriate to presume that the charitable company will continue in operation.

**CORNWALL REFUGE TRUST****TRUSTEES ANNUAL REPORT FOR THE YEAR ENDED 31 MARCH 2021 (continued)****TRUSTEES' RESPONSIBILITIES IN RELATION TO THE FINANCIAL STATEMENTS (continued)**

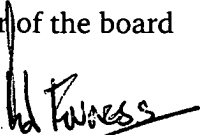
The Trustees are responsible for keeping adequate accounting records that are sufficient to show and explain the charitable company's transactions and disclose with reasonable accuracy at any time the financial position of the charitable company and to enable them to ensure that the financial statements comply with the Companies Act 2006. They are also responsible for safeguarding the assets of the charitable company and hence for taking reasonable steps for the prevention and detection of fraud and other irregularities. The Trustees are also responsible for ensuring that the assets are properly applied in accordance with charity law.

**DISCLOSURE OF INFORMATION TO AUDITORS**

The Trustees confirm that so far as they are aware at the time of approving the Annual Report, there is no relevant audit information of which the auditors are unaware. They have taken all the steps that they ought to have taken as Trustees in order to make themselves aware of any relevant audit information and to establish that the auditors are aware of that information.

This report has been prepared in accordance with the special provisions of Part 15 of the Companies Act 2006 relating to small companies.

By order of the board



Karen Furness (Trustee)

Date: 06-12-21

## **INDEPENDENT AUDITOR'S REPORT**

### **TO THE MEMBERS OF THE CORNWALL REFUGE TRUST**

We have audited the financial statements of Cornwall Refuge Trust for the year ended 31 March 2021 which comprise the Statement of Financial Activities, the Balance Sheet, the Statement of Cash Flows and notes to the financial statements, including a summary of significant accounting policies. The financial reporting framework that has been applied in their preparation is applicable law and United Kingdom Accounting Standards, including Financial Reporting Standard 102 The Financial Reporting Standard applicable in the UK and Republic of Ireland (United Kingdom Generally Accepted Accounting Practice).

In our opinion the financial statements:

- give a true and fair view of the state of the charitable company's affairs as at 31 March 2021 and of its incoming resources and application of resources for the year then ended;
- have been properly prepared in accordance with United Kingdom Generally Accepted Accounting Practice; and
- have been prepared in accordance with the requirements of the Companies Act 2006.

### **Basis for opinion**

We conducted our audit in accordance with International Standards on Auditing (UK) (ISAs (UK)) and applicable law. Our responsibilities under those standards are further described in the auditor's responsibilities for the audit of the financial statements section of our report. We are independent of the charitable company in accordance with the ethical requirements that are relevant to our audit of the financial statements in the UK, including the FRC's Ethical Standard, and we have fulfilled our other ethical responsibilities in accordance with these requirements. We believe that the audit evidence we have obtained is sufficient and appropriate to provide a basis for our opinion.

### **Conclusions relating to going concern**

In auditing the financial statements, we have concluded that the trustees' use of the going concern basis of accounting in the preparation of the financial statements is appropriate.

Based on the work we have performed, we have not identified any material uncertainties relating to events or conditions that, individually or collectively may cast significant doubt on the trust's ability to continue as a going concern for a period of at least twelve months from when the financial statements are authorised for issue.

Our responsibilities and the responsibilities of the trustees with respect to going concerns are described in the relevant sections of this report.

### **Other information**

The Trustees are responsible for the other information. The other information comprises the information included in the annual report, other than the financial statements and our auditor's report thereon. Our opinion on the financial statements does not cover the other information and, except to the extent otherwise explicitly stated in our report, we do not express any form of assurance conclusion thereon.

In connection with our audit of the financial statements, our responsibility is to read the other information and, in doing so, consider whether the other information is materially inconsistent with the financial statements or our knowledge obtained in the audit or otherwise appears to be materially misstated. If we identify such material inconsistencies or apparent material misstatements, we are required to determine whether there is a material misstatement in the financial statements or a material misstatement of the other information. If, based on the work we have performed, we conclude that there is a material misstatement of this other information, we are required to report that fact.

We have nothing to report in this regard.

**INDEPENDENT AUDITORS' REPORT****TO THE MEMBERS OF THE CORNWALL REFUGE TRUST (continued)****Opinions on other matters prescribed by the Companies Act 2006**

In our opinion based on the work undertaken in the course of our audit

- the information given in the Trustees' Report, which includes the Directors' Report prepared for the purposes of company law, for the financial year for which the financial statements are prepared is consistent with the financial statements; and
- the Directors' Report included within the Trustees' Report have been prepared in accordance with applicable legal requirements.

**Matters on which we are required to report by exception**

In light of the knowledge and understanding of the charitable company and its environment obtained in the course of the audit, we have not identified material misstatements in the Directors' Report included within the Trustees' Report.

We have nothing to report in respect of the following matters in relation to which the Companies Act 2006 requires us to report to you if, in our opinion:

- adequate accounting records have not been kept; or
- the financial statements are not in agreement with the accounting records and returns; or
- certain disclosures of Trustees' remuneration specified by law are not made; or
- we have not received all the information and explanations we require for our audit; or
- the Trustees were not entitled to prepare the financial statements in accordance with the small companies regime and take advantage of the small companies exemption in preparing the Trustees' Report and take advantage of the small companies exemption from the requirement to prepare a Strategic Report.

**Responsibilities of Trustees**

As explained more fully in the Trustees' Responsibilities Statement set out on page 9, the Trustees (who are also the directors of the charitable company for the purposes of company law) are responsible for the preparation of the financial statements and for being satisfied that they give a true and fair view, and for such internal control as the Trustees determine is necessary to enable the preparation of financial statements that are free from material misstatement, whether due to fraud or error.

In preparing the financial statements, the Trustees are responsible for assessing the charitable company's ability to continue as a going concern, disclosing, as applicable, matters related to going concern and using the going concern basis of accounting unless the Trustees either intend to liquidate the charitable company or to cease operations, or have no realistic alternative but to do so.

**Auditor's responsibilities for the audit of the financial statements**

Our objectives are to obtain reasonable assurance about whether the financial statements as a whole are free from material misstatement, whether due to fraud or error, and to issue an auditor's report that includes our opinion. Reasonable assurance is a high level of assurance, but is not a guarantee that an audit conducted in accordance with ISAs (UK) will always detect a material misstatement when it exists.

Misstatements can arise from fraud or error and are considered material if, individually or in the aggregate, they could reasonably be expected to influence the economic decisions of users taken on the basis of these financial statements.

**INDEPENDENT AUDITORS' REPORT****TO THE MEMBERS OF THE CORNWALL REFUGE TRUST (continued)****Auditor's responsibilities for the audit of the financial statements (continued)**

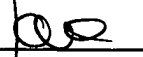
Irregularities, including fraud, are instances of non-compliance with laws and regulations. We design procedures in line with our responsibilities, outlined above, to detect material misstatements in respect of irregularities, including fraud. The extent to which our procedures are capable of detecting irregularities, including fraud, is detailed below.

- Enquiry of management and those charged with governance around actual and potential litigation and claims plus consideration of compliance functions to identify any instances of non-compliance with laws and regulations.
- Reviewing legal fee invoices to identify any instances of non-compliance with laws and regulations.
- Reviewing minutes of meetings of the trustees.
- Reviewing financial statement disclosures and to supporting documentation to access compliance with applicable laws and regulations.
- Considering and testing areas which involve cash handling.
- Auditing the risk of management override of controls, including testing journal entries and other adjustments for appropriateness.

A further description of our responsibilities for the audit of the financial statements is located on the Financial Reporting Council's website at: [www.frc.org.uk/auditorsresponsibilities](http://www.frc.org.uk/auditorsresponsibilities). This description forms part of our auditor's report.

**Use of our report**

This report is made solely to the charitable company's members, as a body, in accordance with Chapter 3 of Part 16 of the Companies Act 2006. Our audit work has been undertaken so that we might state to the charitable company's members those matters we are required to state to them in an auditor's report and for no other purpose. To the fullest extent permitted by law, we do not accept or assume responsibility to anyone other than the charitable company and the charitable company's members as a body, for our audit work, for this report, or for the opinions we have formed.



**Jane Webb**  
**Senior Statutory Auditor**  
**For and on behalf of:**

**PHILLIPS FRITH LLP**  
**CHARTERED ACCOUNTANTS**  
**REGISTERED AUDITORS**  
**9 Tregarne Terrace**  
**ST AUSTELL**

**Date:** 4th December 2021

**CORNWALL REFUGE TRUST****STATEMENT OF FINANCIAL ACTIVITIES (INCLUDING INCOME AND EXPENDITURE ACCOUNT)**  
**FOR THE YEAR ENDED 31 MARCH 2021**

	<u>Notes</u>	<u>Un- restricted funds</u>	<u>Restricted funds</u>	<u>Endowment funds</u>	<u>Total funds Y/E 31/3/2021</u>	<u>Total funds Y/E 31/3/2020</u>
		£	£	£	£	£
<b>INCOME FROM:</b>						
Donations	2	23,253	416,287	-	439,540	413,247
Charitable activities:						
Housing benefit and personal service charges		100,926	-	-	100,926	77,364
Investment Income	3	139	-	-	139	718
Other		3,186	-	-	3,186	2,908
<b>TOTAL INCOME</b>		<b>127,504</b>	<b>416,287</b>	<b>-</b>	<b>543,791</b>	<b>494,237</b>
<b>EXPENDITURE ON:</b>	4					
<b>Raising funds:</b>						
Fundraising		157	2,710	-	2,867	2,937
Grants		-	11,276	-	11,276	16,351
		<b>157</b>	<b>13,986</b>	<b>-</b>	<b>14,143</b>	<b>19,288</b>
<b>Charitable activities:</b>						
Housing costs		51,474	191,710	412	243,596	309,011
Counselling and support projects		6,959	223,515	-	230,474	122,924
		<b>58,433</b>	<b>415,225</b>	<b>412</b>	<b>474,070</b>	<b>431,935</b>
<b>TOTAL EXPENDITURE</b>		<b>58,590</b>	<b>429,211</b>	<b>412</b>	<b>488,213</b>	<b>451,223</b>
<b>NET INCOME/(EXPENDITURE) AND NET MOVEMENT IN FUNDS</b>		<b>68,914</b>	<b>(12,924)</b>	<b>(412)</b>	<b>55,578</b>	<b>43,014</b>
Change in market value of investments		-	-	(803)	(803)	-
<b>RECONCILIATION OF FUNDS:</b>						
Total funds brought forward		360,688	313,824	8,598	683,110	640,096
<b>TOTAL FUNDS CARRIED FORWARD</b>		<b>429,602</b>	<b>300,900</b>	<b>7,383</b>	<b>737,885</b>	<b>683,110</b>

The statement of financial activities includes all gains and losses recognised in the year.


The notes on pages 17 – 31 form part of these accounts.

**CORNWALL REFUGE TRUST****BALANCE SHEET****AS AT 31 MARCH 2021**

	<u>Notes</u>	£	<u>2021</u>	£	£	<u>2020</u>	£
<b>FIXED ASSETS</b>							
Tangible fixed assets	9		229,589			235,847	
Investments	10		6,692			8,598	
			<u>236,281</u>			<u>244,445</u>	
<b>CURRENT ASSETS</b>							
Debtors	11	11,167			14,213		
Cash at bank and in hand		<u>542,858</u>			<u>478,297</u>		
		554,025			492,510		
<b>CURRENT LIABILITIES</b>							
Creditors – amounts falling due within one year	12		<u>(52,421)</u>		<u>(53,845)</u>		
<b>NET CURRENT ASSETS</b>				<u>501,604</u>		<u>438,665</u>	
<b>NET ASSETS</b>				<u>737,885</u>		<u>683,110</u>	
<b>FUNDS</b>							
Unrestricted funds							
Designated funds	14	70,579			70,579		
Other charitable purposes	14	<u>359,023</u>			<u>290,109</u>		
Total unrestricted funds				429,602		360,688	
Restricted funds	14		300,900			313,824	
Expendable endowment fund	14		<u>7,383</u>			<u>8,598</u>	
<b>TOTAL CHARITY FUNDS</b>				<u>737,885</u>		<u>683,110</u>	

These accounts have been prepared in accordance with the provisions applicable to companies subject to the small companies regime within Part 15 of the Companies Act 2006.

Approved by the Trustees and authorised for issue on 06th December 2021 and signed on their behalf by:

  
 \_\_\_\_\_ Karen Furness

  
 \_\_\_\_\_ Kate Hamilton

**Company Registration Number 05178212**

The notes on pages 17 to 31 form part of these financial statements.



**CORNWALL REFUGE TRUST**  
**STATEMENT OF CASH FLOWS**  
**YEAR ENDED 31 MARCH 2021**

	<u>Notes</u>	£	<u>2021</u>	£	£	<u>2020</u>	£
<b>CASH FLOWS FROM OPERATING ACTIVITIES:</b>							
Net cash provided by operating activities	15			63,319			50,111
<b>CASH FLOWS FROM INVESTING ACTIVITIES</b>							
Interest received			139			718	
Meteor shares sales income			1,103			-	
Purchase of equipment			-			(2,477)	
<b>NET CASH PROVIDED BY/(USED IN) INVESTING ACTIVITIES</b>				<u>1,242</u>		<u>(1,759)</u>	
<b>INCREASE IN CASH AND CASH EQUIVALENTS IN THE YEAR</b>	16			<u>64,561</u>		<u>48,352</u>	
Increase in cash and cash equivalents in the year	16			64,561		48,352	
Cash and cash equivalents at the beginning of the year				<u>478,297</u>		<u>429,945</u>	
<b>CASH AND CASH EQUIVALENTS AT THE END OF THE YEAR</b>	16			<u>542,858</u>		<u>478,297</u>	

The notes on pages 17 to 31 form part of these financial statements.

**CORNWALL REFUGE TRUST**  
**NOTES TO THE FINANCIAL STATEMENTS**  
**FOR THE YEAR ENDED 31 MARCH 2021**

## **1 ACCOUNTING POLICIES**

### **Charity Information**

Cornwall Refuge Trust is a private charitable company limited by guarantee and has no share capital, incorporated in England and Wales. The principal address is PO Box 80, Truro, Cornwall.

#### **a) Basis of preparation and compliance with statutory requirements**

The individual Charity's financial statements have been prepared in accordance with the Accounting and Reporting by Charities: Statement of Recommended Practice applicable to charities preparing their accounts in accordance with the Financial Reporting Standard applicable in the UK and Republic of Ireland (FRS 102) (effective 1 January 2019) – (Charities SORP (FRS 102)) (second edition – October 2019), the Financial Reporting Standard applicable in the UK and Republic of Ireland (FRS 102) and the Companies Act 2006.

The accounts are prepared in sterling, which is the functional currency of the Charity. Monetary amounts in these financial statements are rounded to the nearest £.

The Charity meets the definition of a public benefit entity under FRS 102. Assets and liabilities are initially recognised at historical cost or transaction value. The principal accounting policies adopted are set out below.

The financial statements have been prepared on the assumption that the Charity is able to carry on as a going concern, which the Trustees consider appropriate having regard to the circumstances outlined in note 20 to the financial statements. The Trustees have no material uncertainties about the Charity's ability to continue.

#### **b) Fund accounting**

The Charity has various types of funds for which it is responsible, and which require separate disclosure. These are as follows:

**RESTRICTED FUNDS** These are earmarked by the donor, or the terms of an appeal, for specific purposes within the overall aims of the Charity or for specific projects being undertaken by the Charity. The donation and income deriving therefrom will be used in accordance with the specific purposes.

**UNRESTRICTED FUNDS** Funds which are expendable at the discretion of the board in furtherance of the purposes of the Charity.

**DESIGNATED FUNDS** The board may at its discretion set aside unrestricted funds for specific purposes. The aim and use of each designated fund is set out in note 13. Discretionary reallocations between designated and general funds are treated as transfers in the notes to the financial statements.

**EXPENDABLE ENDOWMENT FUND** This was created by a gift of investments from the WCYT. The income from these investments is restricted as described in note 14.

A description of the specific funds in existence during the year is given in note 14.

#### **c) Income**

Income is recognised when the Charity has entitlement to the funds, any performance conditions attached to the item(s) of income have been met, it is probable that the income will be received and the amount can be measured reliably.

**CORNWALL REFUGE TRUST****NOTES TO THE FINANCIAL STATEMENTS (continued)****FOR THE YEAR ENDED 31 MARCH 2021****1 ACCOUNTING POLICIES (continued)****c) Income (continued)****i) DONATIONS**

Donations and grants are recognised when receivable. Donations received for the general purposes of the Charity are included as unrestricted funds. Donations for activities restricted by the wishes of the donor are taken to restricted funds. Donations required to be retained as capital in accordance with the donor's wishes are accounted for as endowments - permanent or expendable according to the nature of the restriction.

**ii) GRANTS AND GOVERNMENT GRANTS**

Income from government and other grants, including capital grants, is recognised when the Charity has entitlement to the funds, it is probable that the income will be received and the amount can be measured reliably, except as follows:-

- when donors specify that grants given to the Charity must be used in future accounting years, the income is deferred until those years.
- when donors impose conditions which have to be fulfilled before the Charity becomes entitled to use such income, the income is deferred and not included in incoming resources until the pre-conditions for use have been met. A grant received before the recognition criteria are satisfied is recognised as a liability.

**iii) FUNDRAISING EVENTS**

Voluntary income arising from events, principally donations, is recognised in the period in which the event takes place.

**iv) CHARITABLE ACTIVITIES**

Income from charitable activities comprises of charges and benefits receivable for services such as housing benefits and personal service charges. These are accounted for in the year in which the service is provided.

**d) Donated goods and services**

Donated fixed assets are included in income at the estimated value of the gift to the charity when received, with the other entry being capitalised in fixed assets.

In accordance with the Charities SORP (FRS 102), the general volunteer time provided to the Charity is not recognised and is referred to in the trustees' annual report with more information about their contribution.

**e) Expenditure**

Expenditure is recognised once there is a legal or constructed obligation to make a payment to a third party, it is probable that settlement will be required and the amount of the obligation can be measured reliably. Expenditure is accounted for on an accruals basis and is classified under the following activity headings:

- Costs of raising funds comprise the costs of generating voluntary income and securing grants.
- Expenditure on charitable activities includes the costs incurred by the Charity in meeting the charitable purposes.
- Other expenditure represents those items not falling into any other heading.

**CORNWALL REFUGE TRUST****NOTES TO THE FINANCIAL STATEMENTS (continued)****FOR THE YEAR ENDED 31 MARCH 2021****1 ACCOUNTING POLICIES (continued)****f) Allocation of support costs**

Support costs are those functions that assist the work of the Charity but do not directly undertake charitable activities. Support costs include management, administration, finance, personnel and governance costs which support the Charity's activities. These costs have been allocated between costs of raising funds and expenditure on charitable activities. The basis on which support costs have been allocated are set out in Note 5.

Governance costs comprise of all costs identified as wholly or mainly attributable to ensuring the public accountability of the Charity and its compliance with regulations. These costs include board expenses, legal advice and audit fees.

**g) Tangible fixed assets and depreciation**

Tangible fixed assets costing more than £1,000 are capitalised and included at cost including any incidental expenses of acquisition if in line with the donor documentation.

Depreciation is provided on all tangible fixed assets at rates calculated to write off the cost over their expected economic lives as follows:

Freehold property	- 50 years on the straight line method
Log Cabin	- 10% per annum on the straight line method
Computer equipment	- 25% per annum on the straight line method
Equipment	- 20% per annum on the straight line method

**h) Fixed asset investments**

Fixed asset investments are initially measured at transaction price excluding transaction costs, and are subsequently measured at fair value at each reporting date using the closing market price. Changes in fair value are recognised in the statement of financial activities for the year.

**i) Cash and cash equivalents**

Cash and cash equivalents are basic financial assets and include cash in hand, deposits held with banks and short-term liquid investments with original maturities of three months or less.

**j) Financial instruments**

The Charity only has financial assets and financial liabilities of a kind that qualify as basic financial instruments. Basic financial instruments are initially recognised at transaction value and subsequently measured at their settlement value.

**k) Pension costs**

Cornwall Refuge Trust offers a stakeholder scheme to its employees and makes contributions as detailed in note 18. The charity has no liability beyond making its contributions and paying across the deductions for the employee's contributions. The costs are expensed in the SOFA (see notes 5 and 7 for allocation method). Any difference between the share to the SOFA and the contributions payable to the scheme is shown as an asset or liability in the Balance Sheet.

**l) Operating leases**

Rentals applicable to operating leases are charged to the SOFA over the period in which the lease falls due.

**CORNWALL REFUGE TRUST****NOTES TO THE FINANCIAL STATEMENTS (continued)****FOR THE YEAR ENDED 31 MARCH 2021**

<b>2 INCOME FROM DONATIONS</b>	<b><u>2021</u></b>	<b><u>2020</u></b>
	<b>£</b>	<b>£</b>
<b>Donations and fundraising</b>		
General donations	22,053	4,532
Housing cost donation	575	3,191
Counselling and support project donations	12,327	12,015
Fundraising events	90	146
COVID-19 donations	710	-
Value of gifts in kind	-	1,934
Value of gift of expendable endowment	-	8,598
	<u>35,755</u>	<u>30,416</u>
<b>Grants</b>		
Housing cost grants	204,633	266,451
Counselling and support project grants	153,187	115,980
Other grants	2,615	400
COVID-19 grants	43,350	-
	<u>403,785</u>	<u>382,831</u>
<b>TOTAL</b>	<u>439,540</u>	<u>413,247</u>

The income received from donations included £12,902 restricted donations (2020: £15,206). The income received from grants included £403,785 restricted grants (2020: £382,431). Details of restricted income has been included in note 14. The income received from grants included £202,938 (2020: £163,141) received from local authorities.

<b>3 INVESTMENT INCOME</b>	<b><u>2021</u></b>	<b><u>2020</u></b>
	<b>£</b>	<b>£</b>
Bank interest receivable	<u>139</u>	<u>718</u>
	<u>139</u>	<u>718</u>

**CORNWALL REFUGE TRUST****NOTES TO THE FINANCIAL STATEMENTS (continued)****FOR THE YEAR ENDED 31 MARCH 2021****4 TOTAL RESOURCES EXPENDED**

	<b>Activities undertaken directly</b>	<b>Support costs</b>	<b>Governance costs</b>	<b>2021 Total</b>	<b>2020 Total</b>
	<b>£</b>	<b>£</b>	<b>£</b>	<b>£</b>	<b>£</b>
<b>Cost of raising funds</b>					
Fundraising	-	2,867	-	2,867	2,937
Grants	-	11,276	-	11,276	16,351
	-	14,143	-	14,143	19,288
<b>Expenditure on charitable activities</b>					
Housing costs	186,725	46,296	10,575	243,596	309,011
Counselling and support project	217,457	11,782	1,235	230,474	122,924
	404,182	58,078	11,810	474,070	431,935
<b>Total resources expended</b>	404,182	72,221	11,810	488,213	451,223

**5 SUPPORT COSTS ALLOCATION**

	<b>Raising funds</b>	<b>Charitable activities</b>	<b>Governance activity</b>
	<b>£</b>	<b>£</b>	<b>£</b>
Trust Manager's wages	4,084	21,186	255
Administrator's wages	2,427	20,629	1,213
Employer's pension contributions	419	13,281	280
Governance costs	-	-	10,061
Fundraising costs	7,213	-	-
<b>Total support costs - year ended 31/3/2021</b>	14,143	55,096	11,809
<b>Total support costs - year ended 31/3/2020</b>	19,288	53,251	17,384

Cost allocation includes an element of judgement and the Charity has had to consider the cost/benefit of detailed calculations and record keeping. The basis for support costs allocation of wages is the estimated percentage of time spent on each activity. Governance costs are made up of the following:

	<b>2021</b>	<b>2020</b>
	<b>£</b>	<b>£</b>
Audit fees	6,300	6,240
Trustees' meetings	-	40
Legal and professional fees	3,761	9,446
	10,061	15,726

Governance costs have been allocated on a consistent basis to previous years but have been allocated to Charitable Activities.

**CORNWALL REFUGE TRUST****NOTES TO THE FINANCIAL STATEMENTS (continued)****FOR THE YEAR ENDED 31 MARCH 2021****6 TAXATION**

Cornwall Refuge Trust is a registered charity and is thus exempt from tax on income and gains falling within section 505 of the Taxes Act 1988 or s256 of the Taxation of Chargeable Gains Act 1992 to the extent that these are applied to its charitable objects. No tax charges have arisen in the Charity. There was no UK Corporation Tax payable by Cornwall Refuge Trust in 2021 or 2020.

**7 STAFF COSTS AND TRUSTEES' REMUNERATION**

	<b><u>2021</u></b>	<b><u>2020</u></b>
	<b>£</b>	<b>£</b>
Wages and salaries	303,904	263,372
Social Security costs	18,805	17,050
Pension contributions	13,980	12,200
	<u>336,689</u>	<u>292,622</u>

Pension costs are allocated to activities in proportion to the related staffing costs incurred. These are allocated to restricted and unrestricted funds depending on the contracted duties of the relevant employees.

The monthly average number of staff employed by the Charity during the year was made up as follows:	<b>No.</b>	<b>No.</b>
Trust manager	1	1
Administrators	1	1
Project managers	1	1
Project workers	9	9
Children's worker	1	1
Counselling co-ordinator	1	1
Volunteer supervisor	0	0
	<u>14</u>	<u>14</u>

No employee earned more than £60,000 per annum. The Trust considered its key management personnel in the year to comprise of the trustees and the Trust manager. The total employment benefits including pension contributions of the key management personnel were £40,773 (2020: £28,257). The Trustees were not paid or reimbursed for expenses during the year. The Trustees received no remuneration during the year.

**8 NET MOVEMENTS IN FUNDS**

Net movement in funds is arrived at after charging:

	<b><u>2021</u></b>	<b><u>2020</u></b>
	<b>£</b>	<b>£</b>
Depreciation of tangible fixed assets	6,258	6,339
Auditors' remuneration:		
- audit of charitable company	3,500	3,500
- other accountancy services	2,800	2,740
Operating lease rentals	<u>-</u>	<u>1,468</u>

**CORNWALL REFUGE TRUST****NOTES TO THE FINANCIAL STATEMENTS (continued)****FOR THE YEAR ENDED 31 MARCH 2021****9 TANGIBLE FIXED ASSETS**

	Freehold land and buildings	Log cabin	Computer equipment	Equipment	Total
<b>Cost:</b>	£	£	£	£	£
At 1 April 2020					
and at 31 March 2021	<u>263,931</u>	<u>11,555</u>	<u>2,334</u>	<u>32,129</u>	<u>309,949</u>
<b>Depreciation:</b>					
At 1 April 2020	31,516	11,555	884	30,147	74,102
Charge for the year	<u>5,279</u>	<u>-</u>	<u>484</u>	<u>495</u>	<u>6,258</u>
At 31 March 2021	<u>36,795</u>	<u>11,555</u>	<u>1,368</u>	<u>30,642</u>	<u>80,360</u>
<b>Net Book Value:</b>					
31 March 2021	<u>227,136</u>	<u>-</u>	<u>966</u>	<u>1,487</u>	<u>229,589</u>
31 March 2020	<u>232,415</u>	<u>-</u>	<u>1,450</u>	<u>1,982</u>	<u>235,847</u>

All fixed assets are held for charitable use.

**10 FIXED ASSET INVESTMENTS**

	<b>Open-end investment fund</b>
	£
<b>Cost or valuation</b>	
At 1 April 2020	8,598
Disposals	<u>(1,103)</u>
	7,495
Change in market value of investments	<u>(803)</u>
At 31 March 2021	<u>6,692</u>

This open-end investment fund was gifted to the Charity in 2019. There is no historical cost to the Charity. See note 14.

**11 DEBTORS**

	<b>2021</b>	<b>2020</b>
	£	£
Trade debtors	8,204	2,684
Prepayments and accrued income	2,608	11,271
Other debtors	<u>355</u>	<u>258</u>
	<u>11,167</u>	<u>14,213</u>



**CORNWALL REFUGE TRUST****NOTES TO THE FINANCIAL STATEMENTS (continued)****FOR THE YEAR ENDED 31 MARCH 2021****12 CREDITORS: AMOUNTS FALLING  
DUE WITHIN ONE YEAR**

	<b><u>2021</u></b>	<b><u>2020</u></b>
	<b>£</b>	<b>£</b>
Trade creditors	5,335	4,089
Other taxes and Social Security	5,298	7,144
Accruals	11,782	9,452
Other creditors	214	359
Deferred income (see below)	29,792	32,801
	<b><u>52,421</u></b>	<b><u>53,845</u></b>

**DEFERRED INCOME**

	<b>£</b>
Balance at 1 April 2020	32,801
Deferred in the year	29,792
Released to income in the year	<u>(32,801)</u>
Balance at 31 March 2021	<b><u>29,792</u></b>

Deferred income comprises of voluntary income which has been received that is subject to donor imposed conditions that specify that the expenditure of resources must take place in a future accounting period.

**13 ANALYSIS OF NET ASSETS  
BETWEEN FUNDS**

	<b><u>Designated funds</u></b>	<b><u>Unrestricted funds</u></b>	<b><u>Restricted funds</u></b>	<b><u>Endowment funds</u></b>	<b><u>Total</u></b>
	<b>£</b>	<b>£</b>	<b>£</b>	<b>£</b>	<b>£</b>
Tangible fixed assets	-	2,453	226,446	6292	236,281
Cash at bank and in hand	70,579	361,890	109,698	691	542,858
Other net current liabilities	-	(5,320)	(35,935)	-	(41,254)
<b>TOTAL FUNDS</b>	<b>70,579</b>	<b>359,023</b>	<b>300,900</b>	<b>6,983</b>	<b>737,885</b>

**Analysis of net assets between funds - previous year**

	<b><u>Designated funds</u></b>	<b><u>Unrestricted funds</u></b>	<b><u>Restricted funds</u></b>	<b><u>Endowment funds</u></b>	<b><u>Total</u></b>
	<b>£</b>	<b>£</b>	<b>£</b>	<b>£</b>	<b>£</b>
Tangible fixed assets	-	3,432	232,415	8,598	244,445
Cash at bank and in hand	70,579	289,651	118,067	-	478,297
Other net current liabilities	-	(2,974)	(36,658)	-	(39,632)
<b>TOTAL FUNDS</b>	<b>70,579</b>	<b>290,109</b>	<b>313,824</b>	<b>8,598</b>	<b>683,110</b>

**CORNWALL REFUGE TRUST****NOTES TO THE FINANCIAL STATEMENTS (continued)****FOR THE YEAR ENDED 31 MARCH 2021****14 STATEMENT OF FUNDS****Analysis of movement in funds – current year**

	<b><u>Balance at 1 April 2020</u></b>	<b><u>Income</u></b>	<b><u>Expenditure</u></b>	<b><u>Transfers</u></b>	<b><u>Balance at 31 March 2021</u></b>
	<b><u>£</u></b>	<b><u>£</u></b>	<b><u>£</u></b>	<b><u>£</u></b>	<b><u>£</u></b>
<b>Designated funds</b>					
Pet scheme	579	-	-	-	579
Move on house fund	70,000	-	-	-	70,000
<b>Total designated funds</b>	<b>70,579</b>	<b>-</b>	<b>-</b>	<b>-</b>	<b>70,579</b>
<b>Other charitable purposes</b>	<b>290,109</b>	<b>127,504</b>	<b>(42,818)</b>	<b>(15,772)</b>	<b>359,023</b>
<b>Total unrestricted funds</b>	<b>360,688</b>	<b>127,504</b>	<b>(42,818)</b>	<b>(15,772)</b>	<b>429,602</b>
<b>Restricted funds</b>					
Realised Endowment Fund	46,192	-	(700)	-	45,492
Community Safety Partnership Fund	7,999	116,196	(135,826)	12,295	664
CC Children's Refuge Fund	535	16,797	(17,332)	-	-
Children's project	1,328	1,745	(1,479)	-	1,594
Helpline funding	-	25,250	(28,727)	3,477	-
Support Group – Women	3,563	1,050	(1,592)	-	3,021
Support Group – Men	1,194	1,044	(946)	-	1,292
WAVES donations	3,546	4,574	-	-	8,120
WAVES grant	7,500	38,100	(42,841)	-	2,759
Big Lottery Fund Reaching Communities – Norda House Project	1,073	88,437	(89,510)	-	-
Hardship fund – Women	240	1,500	(1,657)	-	83
Hardship fund – Men	492	1,000	(1,107)	-	385
Male Refuge Norda fund	209,345	-	(4,579)	-	204,766
Soroptimist uniform fund	-	100	(55)	-	45
Big Lottery Awards4All (Acorn Group)	419	-	-	-	419
West Cornwall Youth Trust	1,328	-	-	-	1,328
Acorn Group travel fund	465	-	-	-	465
Cornwall Community Winter fund	-	400	(400)	-	-
<b>Total restricted funds c/fwd</b>	<b>285,219</b>	<b>296,193</b>	<b>(326,751)</b>	<b>15,772</b>	<b>270,433</b>

**CORNWALL REFUGE TRUST****NOTES TO THE FINANCIAL STATEMENTS (continued)****FOR THE YEAR ENDED 31 MARCH 2021****14 STATEMENT OF FUNDS (continued)**

	<b><u>Balance at 1 April 2020</u></b>	<b><u>Income</u></b>	<b><u>Expenditure</u></b>	<b><u>Transfers</u></b>	<b><u>Balance at 31 March 2021</u></b>
<b>Total restricted funds b/fwd</b>	285,219	296,193	(326,751)	15,772	270,433
Outdoor play equipment fund	800	-	-	-	800
Male refuge donations	1,103	575	(993)	-	685
Big Lottery Awards4All (Norda Child and Family work)	3,475	-	(493)	-	2,982
BBC Children in Need	438	10,000	(9,575)	-	863
ACTS 435	16	3,430	(3,400)	-	46
Lloyds Bank Foundation	13,046	33,114	(46,160)	-	-
The Tudor Trust Fund	5,843	32,000	(19,102)	-	18,741
Bedroom renovations fund	1,384	-	(1,384)	-	-
Pat Newman Memorial Trust	2,500	-	-	-	2,500
Cornwall Council CYP Support Worker	-	6,875	(5,178)	-	1,697
Western Power Grant - Christmas	-	750	(597)	-	153
Tudor Trust Team Wellbeing Grant	-	2,000	-	-	2,000
PCC D&C Additional COVID Funding	-	26,850	(26,850)	-	-
Tudor Trust COVID-19 Grant	-	1,500	(1,500)	-	-
MHCLG COVID-19 Grant	-	3,000	(3,000)	-	-
<b>Total restricted funds</b>	<b><u>313,824</u></b>	<b><u>416,287</u></b>	<b><u>(444,983)</u></b>	<b><u>15,772</u></b>	<b><u>300,900</u></b>
<b>Expendable endowment fund</b>	<b><u>8,598</u></b>	<b><u>-</u></b>	<b><u>(1,215)</u></b>	<b><u>-</u></b>	<b><u>7,383</u></b>
<b>TOTAL FUNDS</b>	<b><u>683,110</u></b>	<b><u>543,791</u></b>	<b><u>(489,016)</u></b>	<b><u>-</u></b>	<b><u>737,885</u></b>

**CORNWALL REFUGE TRUST****NOTES TO THE FINANCIAL STATEMENTS (continued)****FOR THE YEAR ENDED 31 MARCH 2021****14 STATEMENT OF FUNDS (continued)****Analysis of movements in funds – previous year**

	<b>Balance at 1 April 2019</b>	<b>Income</b>	<b>Expenditure</b>	<b>Transfers</b>	<b>Balance at 31 March 2020</b>
	<b>£</b>	<b>£</b>	<b>£</b>	<b>£</b>	<b>£</b>
<b>Designated funds</b>					
Pet scheme	579				579
Move on house fund	70,000	-	-	-	70,000
<b>Total designated funds</b>	<b>70,579</b>	<b>-</b>	<b>-</b>	<b>-</b>	<b>70,579</b>
<b>Other charitable purposes</b>	<b>253,414</b>	<b>88,002</b>	<b>(51,307)</b>	<b>-</b>	<b>290,109</b>
<b>Total unrestricted funds</b>	<b>323,993</b>	<b>88,002</b>	<b>(51,307)</b>	<b>-</b>	<b>360,688</b>
<b>Restricted funds</b>					
Realised Endowment Fund	46,793	-	(601)	-	46,192
Community Safety Partnership Fund	32,637	114,141	(138,779)	-	7,999
CC Children's Refuge Fund	1,000	16,500	(16,965)	-	535
Children's project	1,383	1,203	(1,258)	-	1,328
Big Lottery Awards4All (Art Group)	59	-	(59)	-	-
Helpline funding	1,421	15,013	(16,434)	-	-
Support Group – Women	3,697	1,561	(1,695)	-	3,563
Support Group – Men	1,023	1,009	(838)	-	1,194
WAVES donations	7,293	3,819	(7,566)	-	3,546
WAVES grant	-	22,500	(15,000)	-	7,500
Big Lottery Fund Reaching Communities – Norda House Project	-	149,175	(148,102)	-	1,073
Hardship fund – Women	400	1,000	(1,160)	-	240
Hardship fund – Men	267	1,000	(775)	-	492
Male Refuge Norda fund	214,104	-	(4,759)	-	209,345
Soroptimist uniform fund	28	100	(128)	-	-
Big Lottery Awards4All (Acorn Group)	419	-	-	-	419
West Cornwall Youth Trust	1,328	-	-	-	1,328
Acorn Group travel fund	465	-	-	-	465
Cornwall Community Winter fund	-	400	(400)	-	-
<b>Total restricted funds c/fwd</b>	<b>312,317</b>	<b>327,421</b>	<b>(354,519)</b>	<b>-</b>	<b>285,219</b>

**CORNWALL REFUGE TRUST****NOTES TO THE FINANCIAL STATEMENTS (continued)****FOR THE YEAR ENDED 31 MARCH 2021****14 STATEMENT OF FUNDS (continued)**

	<u>Balance at 1 April 2019</u> £	<u>Income</u> £	<u>Expenditure</u> £	<u>Transfers</u> £	<u>Balance at 31 March 2020</u> £
<b>Total restricted funds</b>					
<b>b/fwd</b>	312,317	327,421	(354,519)	-	285,219
Outdoor play equipment fund	800	-	-	-	800
Truro Cathedral – decoration fund	65	-	(65)	-	-
Male refuge donations	417	966	(280)	-	1,103
Big Lottery Awards4All (Norda Child and Family work)	2,182	5,584	(4,291)	-	3,475
BBC Children in Need	322	10,000	(9,884)	-	438
ACTS 435	-	735	(719)	-	16
Lloyds Bank Foundation	-	32,306	(19,260)	-	13,046
The Tudor Trust Fund	-	16,000	(10,157)	-	5,843
Bedroom renovations fund	-	2,125	(741)	-	1,384
Pat Newman Memorial Trust	-	2,500	-	-	2,500
<b>Total restricted funds</b>	<u>316,103</u>	<u>397,637</u>	<u>(399,916)</u>	<u>-</u>	<u>313,824</u>
<b>Expendable endowment fund</b>	<u>-</u>	<u>8,598</u>	<u>-</u>	<u>-</u>	<u>8,598</u>
<b>TOTAL FUNDS</b>	<u>640,096</u>	<u>494,237</u>	<u>(451,223)</u>	<u>-</u>	<u>683,110</u>

**Designated funds**

The pet scheme is a designated fund set aside by the board in order to enable monies to be available over the long term to cover any costs arising from residents' pets.

The move on house fund is a designated fund set aside by the board for the provision of interim accommodation to assist those moving from intensive support in the Refuge to community living.

**Restricted funds**

The Realised Endowment Fund represents the monies received from the sale of the investments during 2015. The Community Safety Partnership Fund (formally known as Supporting People grant) represents monies given by Cornwall Council towards the cost of the project workers wages and a proportion of the running costs of the Women's Refuge.

The CC Children's Refuge Fund represents monies given by Cornwall Council towards the provision of support for children and young people living in the Refuge.

The children's project represents monies given by Noel Buxton and various donations towards the provision of children's activities and play materials.

The Big Lottery Awards4All (Art Group) fund represents monies given towards the running costs of the Art Group.

**CORNWALL REFUGE TRUST****NOTES TO THE FINANCIAL STATEMENTS (continued)****FOR THE YEAR ENDED 31 MARCH 2021****14 STATEMENT OF FUNDS (continued)****Restricted funds (continued)**

The Helpline funding represents monies given by Cornwall Council and donations from PCC Devon and Cornwall in 2020 and 2021 towards the running costs of the domestic violence helpline.

The Support Group – Women fund includes various donations which were given towards the cost of running the Support Group for women who have suffered from domestic violence.

The Support Group – Men includes various donations given towards the costs of running the Support Group for men who have suffered from domestic violence.

The WAVES donations represent various donations given towards the costs of running the WAVES project.

The WAVES grant represents monies given by First Light towards the costs of running the WAVES project.

Big Lottery Fund Reaching Communities – Norda House Project represents monies given by the Big Lottery to run the male refuge.

The Hardship funds (Women and Men) represents monies given by the Cornwall Community Foundation to be used where there is need in genuine cases of hardship.

The Male Refuge Norda fund represents monies given by The Norda Trust to support the establishment of a male refuge.

The Soroptimist uniform fund represents monies given to fund school uniform for the children staying at the Refuges.

The Big Lottery Awards4All (Acorn Group) represents a grant given by the Big Lottery Fund towards the cost of employing sessional workers and to cover other costs associated with the running of the Acorn Parenting Group.

The West Cornwall Youth Trust represents money given by the West Cornwall Youth Trust towards activities for children and young people who come into the Refuge.

The Acorn Group travel fund represents monies given towards the cost of client travel to the Acorn Parenting Group.

The Cornwall Community Winter fund represents monies given towards the cost of providing warm clothing and heating costs for residents staying in the Refuges, outreach clients and those that are moving on.

The outdoor play equipment fund represents money given by St Austell Soroptimists to help fund replacing the children's outdoor play equipment at the women's refuge.

The Truro Cathedral – decoration fund represents money donated by Truro Cathedral to help fund room decorating within the Refuge.

Male refuge donations includes various donations which were given towards the provision of support for men living in the male refuge.

The Big Lottery Awards4All (Norda Child and Family work) represents a grant given by the Big Lottery Fund towards the cost of employing a Children and Family worker and activities for families staying in Norda House.

The BBC Children in Need fund represents a grant provided in 2019 for the next three years to fund the part time salary of the Children and Family Support worker and activities to support children and young people who have been affected by domestic abuse and violence.

The ACTS 435 fund represents donations given by All Saints 435 to support the needs of the female residents staying at the refuge.

The Lloyds Bank Foundation fund represents grant money given by Lloyds Bank Foundation for England and Wales to fund the volunteer project as well as other core costs of the refuges and the WAVES counselling project.

The Tudor Trust fund represents grant monies given by the Tudor Trust to fund two part time resettlement workers.

The bedroom renovations fund represents various donations given to fund the renovations of bedrooms within the refuges.

The Pat Newman Memorial Trust fund represents money given towards parenting classes for residents staying at the refuge.

**CORNWALL REFUGE TRUST****NOTES TO THE FINANCIAL STATEMENTS (continued)****FOR THE YEAR ENDED 31 MARCH 2021****14 STATEMENT OF FUNDS (continued)****Restricted funds (continued)**

The Cornwall Council CYP Support Worker grant represents money given towards the cost of wages for a new support worker at the refuge.

The Western Power grant – Christmas represents a grant provided to fund Christmas activities for the families staying at the refuge over the festive period.

The Tudor Trust Team Wellbeing grant represents money provided to support staff, volunteer and trustee wellbeing during the COVID-19 pandemic.

The PCC D&C Additional COVID funding represents grants provided to support remote working, staff and general running costs of the Male Refuge during the COVID-19 pandemic.

The Tudor Trust COVID-19 grant represents a grant given to provide lockdown resources, cleaning and other COVID related costs during the COVID-19 pandemic.

The MHCLG COVID-19 grant represents funding to cover COVID related costs during the COVID-19 pandemic.

The Meteor Shares CYP fund represents income and expenses relating to the gifted shares from the West Cornwall Youth Trust, the capital and income are restricted to be used for activities for children and young adults who come into the refuge.

**Transfers**

The deficit from the helpline funding and the community safety partnership has been transferred to the unrestricted fund this year. These transfers have been shown in the comparative figures above.

**Expendable endowment fund**

The expendable endowment fund was established by a gift from West Cornwall Youth Trust in 2019 of a percentage of units held in Meteor Senior Life Settlements Sterling Fund. The Trustees have the power to spend the capital; both the capital and income are restricted to be used for activities for children and young adults who come into the Refuge.

**15 RECONCILIATION OF NET MOVEMENT IN FUNDS TO NET CASH INFLOW FROM OPERATING ACTIVITIES**

	<b><u>2021</u></b>	<b><u>2020</u></b>
	<b>£</b>	<b>£</b>
Net movement in funds	55,578	43,014
Deduct gift of endowment and gifts in kind	-	(10,532)
Depreciation	6,258	6,339
Interest receivable	(139)	(718)
Decrease in debtors	3,046	939
Increase in trade creditors	1,246	713
(Decrease)/Increase in other taxes and Social Security	(1,846)	762
Increase/(Decrease) in other creditors and accruals	2,185	(1,170)
(Decrease)/Increase in deferred income	(3,009)	10,764
	<hr/>	<hr/>
Net cash provided by operating activities	<u>63,319</u>	<u>50,111</u>

**CORNWALL REFUGE TRUST****NOTES TO THE FINANCIAL STATEMENTS (continued)****FOR THE YEAR ENDED 31 MARCH 2021****16 CASH AND CASH EQUIVALENTS**

	<u>2020</u> £	<u>Cash</u> <u>Flow</u> £	<u>2021</u> £
Cash at bank and in hand	478,297	64,561	542,858

**17 PENSION COSTS**

The Charity started to operate a stakeholder pension for employees from 1 October 2006. The employees' and employer's contribution rates are 3% and 5% of basic salaries respectively. In 2018 the Charity started offering an auto-enrolment pension scheme to all employees. The contribution rate in 2020/21 was 3% for the employee and 5% for the employer contributions. The total pension cost to the Charity for the year was £13,980 (2020: £12,200). Outstanding contributions at 31 March 2021, included in other creditors, amounted to £214 (2020: £359).

**18 OPERATING LEASE COMMITMENTS**

At 31 March 2021, the charity had total commitments for future minimum lease payments under non-cancellable operating leases, which fall due as follows:

	<u>2021</u> £	<u>2020</u> £
Within one year	2,517	2,517
Between two and five years	6,083	8,600
	<u>8,600</u>	<u>11,117</u>

**19 FUTURE OPERATIONS AND THE CURRENT ECONOMIC ENVIRONMENT**

In common with many charities delivering services funded by local authorities, Cornwall Refuge Trust is under pressure to maintain or increase the work it does with fewer funds. Efficiencies are achieved wherever possible with more use of volunteer time and the Charity seeks to find alternative funding wherever possible.

The Trustees are not aware of any reason why they should not continue to adopt the going concern basis of accounting.

**20 RELATED PARTIES**

Two Trustees, Ms K Furness and Ms K Hamilton, are partners of Cornwall Law LLP. No payments were made to Cornwall Law LLP (2020: £72). There were no outstanding amounts due at the year end (2020: £nil).